



Security Consultancy International Pte Limited

10 Anson Road, 30-07 International Plaza, Singapore 079903

Telephone: +65 65599330 Fax: +65 62661312

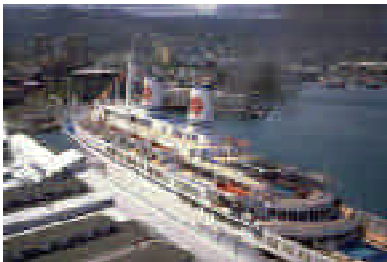
E-mail: sci.pte@btinternet.com Web site: www.international-security-consultants.com

Ships, Ports and Harbours Security

SCI is structured around the belief that the most important asset we contribute is the ability to help our clients pre-empt and avoid potential disruption to their business.

SCI offers the following services to the Ships, Ports and Harbours industries:

- Quantitative threat assessment for ports and port facilities in line with ISPS code.
- Security design and project management
- Port security master planning and systems design and specification
- X-ray container screening and passenger screening systems.
- Bomb threat response planning and explosive protection for container X-ray systems.
- IT security consultancy, disaster recovery and computerised risk analysis.
- Security cost reduction consultancy and manpower reviews for port and port facilities.
- All forms of security training, project security seminars for port facilities.

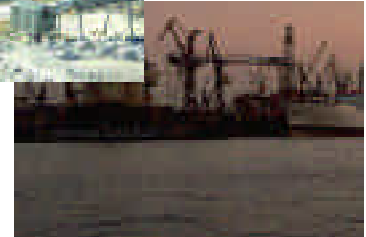
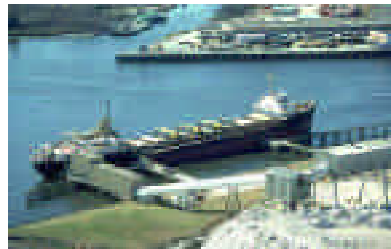


SCI's Ships, Ports and Harbours Projects and Experience

Security Consultancy's has many years' experience working in the ports and harbours industry. Projects on which our consultants have worked include:

- Banagas, Bahrain, security survey of sea port terminal for LPG exports.
- Norman Manley International Airport, Kingston, Jamaica, security survey of sea harbour approaches.
- Security survey of 7 Lebanese oil terminals.

- Elsas, Italy, training on town and harbour security equipment planning.
- Felixstowe, review of the IT systems at the port.
- Vosper Thornycroft, design of ship systems.
- Ship security assessments and ship security plans for clients operating through ports in USA, Central America, Equador, Mediterranean and Northern Europe.
- Ship security plans approved by Flag Administration or Recognised Security Organisation Surveyors trained by Marine Training Division, Lloyds Register.



SCI Pte Delivers:

- A detailed threat assessment for all ships and port facilities.
- A review and report on the effectiveness of existing security measures.
- Recommendations on equipment, systems, policy, procedures and training to improve security.
- A detailed specification of all agreed equipment to be sent out for competitive tender.
- Tender evaluation, project management and commissioning of system.

